



# GAT MONTHLY MEMBERSHIP PROGRESS REPORT

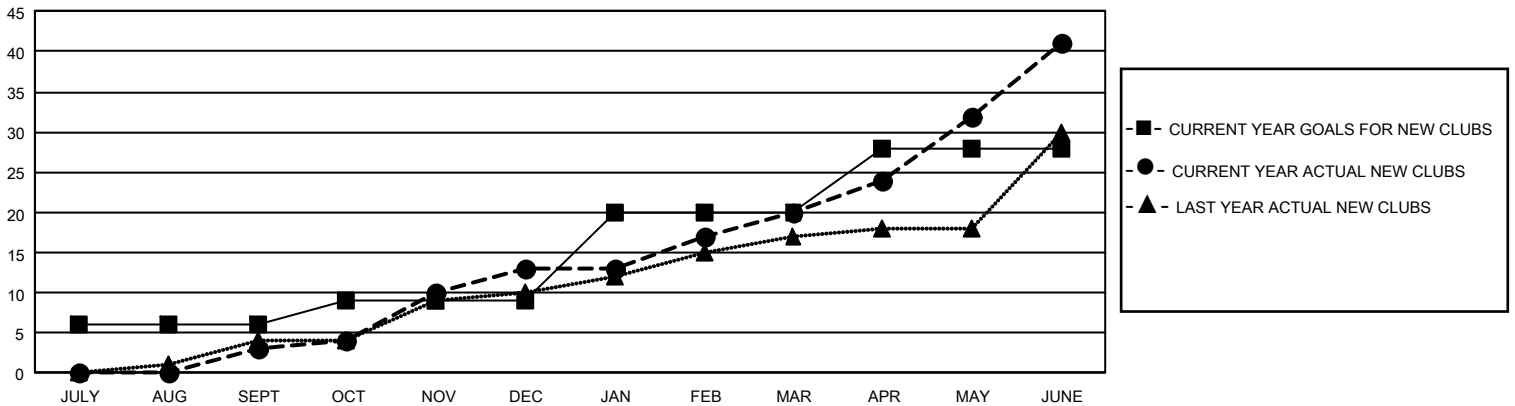
Results as of: 6/30/2025

## GMT Constitutional Area 3, Group D

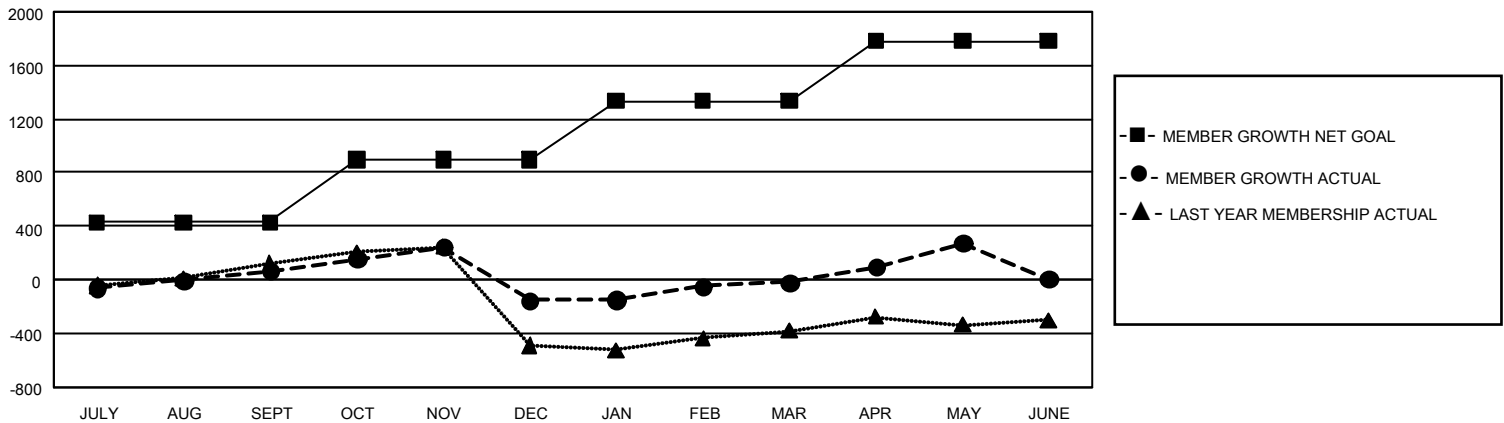
REPORT DOES NOT INCLUDE CLUBS IN UNDISTRICTED AREAS.

Clubs				Members			
RESULTS FOR 2024-2025				RESULTS FOR 2024-2025			
QUARTER	NEW CLUB GOAL	NEW CLUBS	DROPPED CLUBS	QUARTER	MEMBER GROWTH NET GOAL	MEMBER GROWTH ACTUAL	DROPPED MEMBERS ACTUAL (including transfers)
JULY/AUG/SEPT	18	3	10	JULY/AUG/SEPT	429	645	452
OCT/NOV/DEC	9	10	12	OCT/NOV/DEC	469	1,010	1,133
JAN/FEB/MAR	33	7	5	JAN/FEB/MAR	437	548	333
APR/MAY/JUNE	24	21	8	APR/MAY/JUNE	445	1,242	1,091

GOALS AND ACTUAL NEW CLUBS CUMULATIVE



GOALS AND ACTUAL MEMBERS CUMULATIVE



DROPPED CLUBS: 34		540 CLUBS OF 809 ADDED 1 OR MORE NEW MEMBERS	<u>GENDER DISTRIBUTION</u>	
<u>DROPPED MEMBERS</u>  DECEASED 121 CLUB CANCELLED 403 OTHER 2,458 <hr/> TOTAL 2,982			MALE	6,936 (44.97%)
			FEMALE	8,485 (55.02%)
			NON BINARY	0 (0.00%)
		PREFER NOT TO ANSWER	1 (0.01%)	
		<a href="#">CLICK HERE FOR CUMULATIVE MEMBERSHIP DATA</a>	TOTAL FAMILY UNIT MEMBERS	4,780
			FAMILY MEMBERS PAYING HALF DUES	2,688